



Leonard Birch

Australia, Albany

Deo Lucis (Op. 190)

About the artist

I Leonard Birch began Piano Accordion Lessons at the age of six, I then progressed to the Guitar, but as the years went by, I neglected my love for music, mainly the classics and returned thirty years later. And here I am back composing for a number of different instruments for my friends on [free-scores.com](https://www.free-scores.com) to view. I hope to place one score in my site weekly, for either the Accordion, Cello, Clarinet, Classical Guitar, Saxophone, ect, ect.

My dear friend Len, has placed a number of mp3's on my site as well and his interpretation is excellent. I hope you will find the time to have a listen as well.

I would also appreciate comments regarding my scores as this is the only way I may learn and compose better works. I will value and answer all of your e-mails and comments.

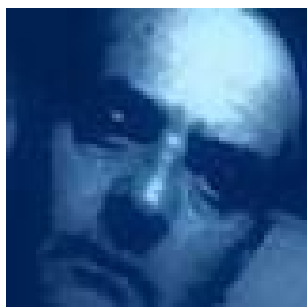
Thank you!

Leonard Birch

Qualification: 8th grade Piano Accordion, intermediate on Guitar and beginner of the Cello.

Artist page : <https://www.free-scores.com/Download-PDF-Sheet-Music-leonard-birch.htm>

About the piece



Title: Deo Lucis [Op. 190]
Composer: Birch, Leonard
Arranger: Birch, Leonard
Copyright: Leonard Birch
Publisher: Birch, Leonard
Instrumentation: Flute solo
Style: Classical

Leonard Birch on [free-scores.com](https://www.free-scores.com)



This work is not Public Domain. You must contact the artist for any use outside the private area.



- listen to the audio
- share your interpretation
- comment
- contact the artist

DEO LUCIS

Op 190

Leonard Alfred Birch

♩ = 50

Flute

p

p

p

p

mf

f *rit.*

mf

p

© 2012 by Leonard Alfred Birch. All rights reserved. Copying Prohibited.

17 *mf* *p*

19 *tr* *tr* *mf*

22 *p*

26 *f*

30

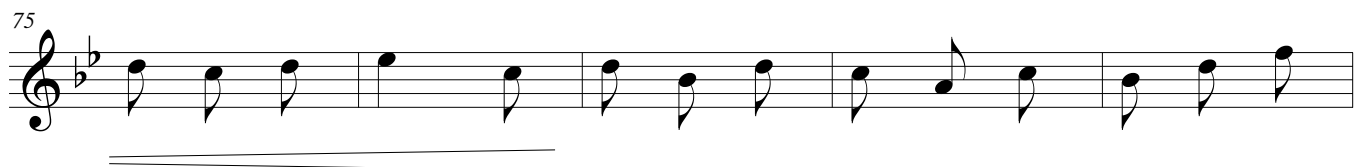
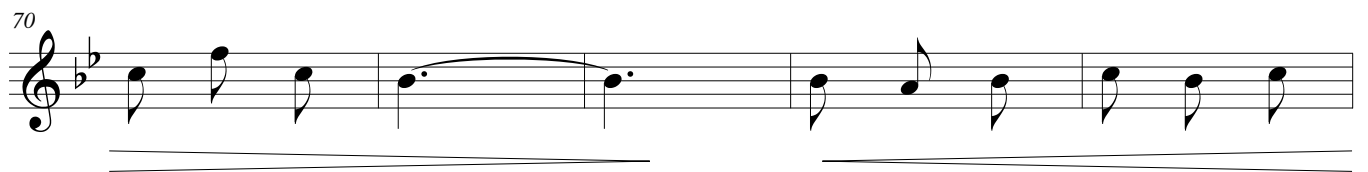
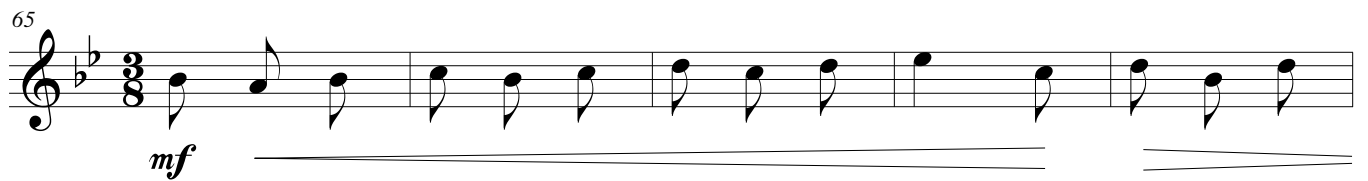
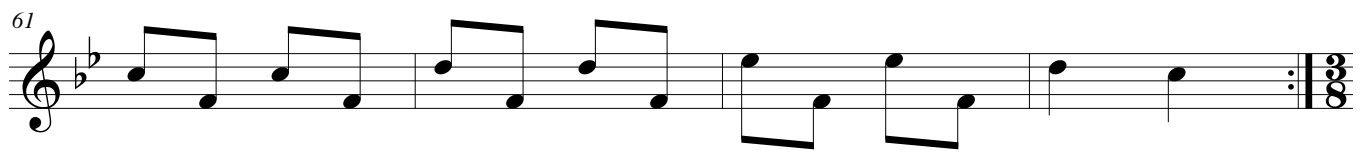
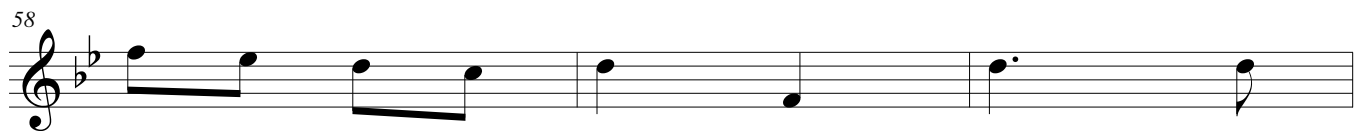
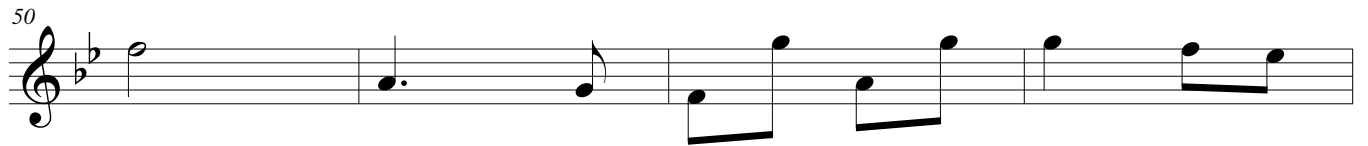
34

38

42

♩ = 108

The image shows a musical score for a piece titled 'DEO LUCIS'. It consists of eight staves of music, each starting with a measure number. The key signature is B-flat major (two flats). The time signature is 2/4. The first staff (measures 17-18) starts with a mezzo-forte (mf) dynamic and a piano (p) dynamic. The second staff (measures 19-21) includes trills (tr) and a mezzo-forte (mf) dynamic. A tempo marking of a quarter note equals 108 beats per minute is placed below the second staff. The third staff (measures 22-25) starts with a piano (p) dynamic. The fourth staff (measures 26-29) starts with a forte (f) dynamic. The fifth staff (measures 30-33) continues the melody. The sixth staff (measures 34-37) continues the melody. The seventh staff (measures 38-41) continues the melody. The eighth staff (measures 42-45) continues the melody.



80

85

90

95

100

p

105

110

114

pp

The musical score for 'DEO LUCIS' begins at measure 80. The key signature is G minor (three flats) and the time signature is 4/4. The score is written for a single melodic line. Measures 80-84 feature a descending eighth-note scale. Measures 85-89 continue this scale. Measures 90-94 consist of eighth-note chords. Measures 95-99 show a descending eighth-note scale. Measures 100-104 feature a half-note scale. Measures 105-109 show a descending eighth-note scale. Measures 110-113 feature a half-note scale. Measures 114-117 show a half-note scale. The score concludes with a double bar line at measure 117. Dynamics include piano (*p*) at measure 100 and pianissimo (*pp*) at measure 114. There are also crescendo and decrescendo markings.