

Concerto for Bassoon and Orchestra in B-flat major

Cello and Bass

Wolfgang Amadeus Mozart

(1756-1791)

K. 191

Allegro

TUTTI

Violoncello e
Contrabbasso

Violoncello e Contrabbasso

[*f*]

p

6

f

p

13

f *p* *f* *p*

f *fp*

20

fp *f* *p* *p*

29

f

SOLO

34

p

42

f *p*

48

55

p

63

TUTTI



SOLO



TUTTI



SOLO



TUTTI



144



TUTTI

151



TUTTI

160



166



K. 191

Andante ma Adagio

TUTTI

Violoncello e
Contrabbasso

SOLO

6



11



16



21



26



31



36



41



46



Musical score for Cello and Bass, measures 31 to 50. The score is in bass clef, key of B-flat major (two flats), and 3/4 time. Measures 31-35 show a melodic line with dynamics *f* and *p*. Measures 36-40 continue the melodic line. Measures 41-45 show a more active melodic line. Measures 46-50 show a melodic line with dynamics *f* and *p*, ending with a double bar line.

K. 191

Rondo
Tempo di Menuetto
TUTTI

Violoncello e Contrabasso



10



20



29



39

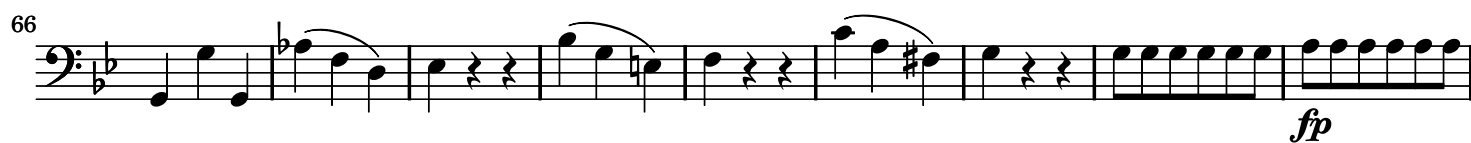
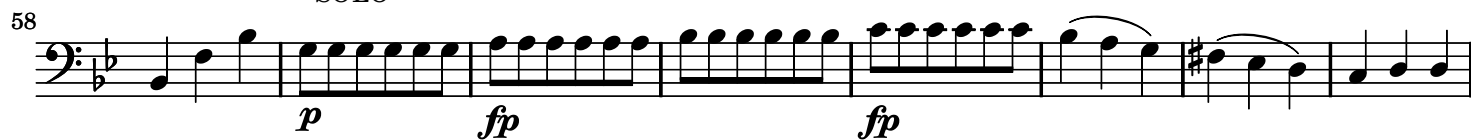


48



Musical score for Violoncello e Contrabasso, measures 5 to 57. The score is in bass clef, key of B-flat major (two flats), and 3/4 time. Measures 5-19 show a melodic line with dynamics *f*. Measures 20-28 show a melodic line with dynamics *p*. Measures 29-38 show a melodic line with dynamics *f*. Measures 39-47 show a melodic line with dynamics *p*. Measures 48-57 show a melodic line with dynamics *f*, ending with a double bar line.

SOLO



TUTTI



SOLO



TUTTI

